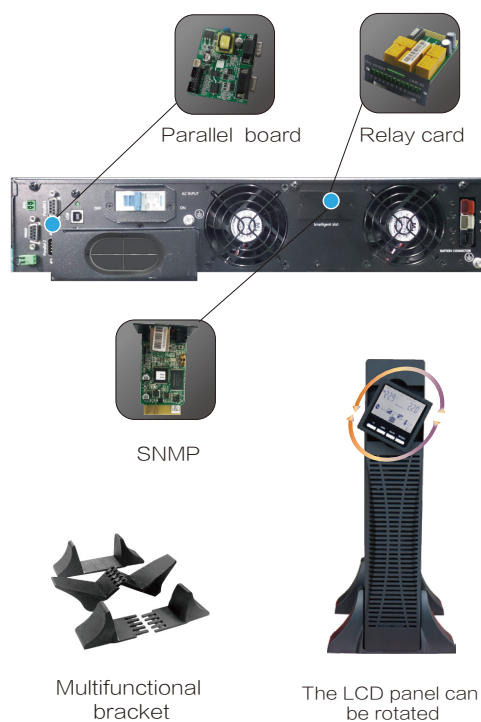




Features

- High power density
- LCD supports Rack/Tower convertible design
- N+X parallel redundancy, support maximum 4 units in parallel
- Online double conversion with full digital control
- Optimization battery group, the quantity of battery: 16/18/20pcs (Settable)
- Wide input voltage range: 110~286Vac
- Wide input frequency range
- Generator compatible
- ECO mode operation for energy saving
- Self-testing when UPS startup
- Multiple communication interface: RS232/USB/EPO(Relay card /SNMP card optional)
- Parallel kit default
- Maximum charging current up to 10A
- Cold start
- Intelligent fan speed regulation
- Multiple protection function: short-circuit, overload, overheat, battery overcharge and overdischarge, output low voltage and fan fault alarm



Technical Specifications:

MODEL		6KVA-RT	10KVA-RT
Capacity		6000VA / 5400W	10000VA / 9000W
INPUT			
Nominal voltage		208/220/230/240Vac	
Input voltage range		110~286Vac	
Power factor		≥0.99	
Bypass voltage range		Max.voltage:220V:+25% (Optional+10%,+15%,+20%) 230V:+20% (Optional+10%,+15%) 240V:+15% (Optional+10%) Min.voltage:-45% (Optional-20%,-30%)	
FREQUENCY			
Frequency range		40~70Hz (50/60Hz Auto-Sensing)	
OUTPUT			
Output voltage		208/220/230/240Vac	
Voltage regulation		± 1%	
Power factor		0.9	
Output frequency	Line mode	± 1%/ ± 2% ± / ± 4%/ ± 5%/ ± 10% of the rated frequency (Optional)	
	Bat. mode	(50/60 ± 0.1%)Hz	
Crest factor		3:1	
Harmonic distortion (THDv)		≤2% Linear load ≤5% Non linear load	
Transfer time	AC mode to Bat.mode	0ms	
	Inverter to Bypass	0ms	
Output waveform		Pure Sinewave	
Overload	Line mode	Load≤ 110% last 60min; ≤ 125% last 10min; ≤ 150% last 1min; > 150% turn to bypass mode immediately	
	Bypass mode	40A (Breaker)	63A (Breaker)
Efficiency		94%	
BATTERY			
Battery voltage		± 96/ ± 108/ ± 120Vdc (Settable)	
Capacity (Standard unit)		9Ah/12V (7Ah/12V optional)	
Typical recharging time		6~8 hours (to 90% of full capacity)	
Charging current		Max.current 10A (Charging current can be set according to battery capacity)	
INDICATORS			
LED display		Line mode,Bat.mode,ECO mode,Bypass mode,Battery low voltage,Overload & UPS fault	
LCD display		Input voltage,Input frequency,Output voltage,Output frequency,Load percentage, Battery voltage,Inner temperature& Remaining battery backup time	
ALARM			
Battery mode		Beeping every 4 seconds	
Battery low		Beeping every second	
Overload		Beeping twice every second	
Fault		Continuously beeping	
PHYSICAL			
Dimension W x D x H (mm)		440 x 625 x 86.5	
Net weight (kg)		16	18
ENVIRONMENT			
Operating temperature		0℃ ~ 40℃	
Storage temperature		-25℃ ~ 55℃	
Humidity range		20~95%RH @ 0~40℃ (Non condensing)	
Altitude		<1500m,derating required when>1500m	
Noise level		<55dB at 1 Meter	<58dB at 1 Meter
STANDARDS			
Safety		IEC/EN62040-1,IEC/EN62477-1	
EMC		IEC/EN62040-2,IEC61000-4-2,IEC61000-4-3,IEC61000-4-4,IEC61000-4-5,IEC61000-4-6,IEC61000-4-8	

Specifications are subject to change without prior notice.
When output voltage is 208Vac,need to derate to 80% of the unit capacity.

BR 6–10kVA battery pack specification

MODEL	BR20120N
BATTERY SYSTEM	
Battery type	VRLA (Lead acid maintenance free battery)
Typical battery recharging time	6~8 hours (to 90% of full capacity)
Typical battery life	3~5 years, depend on discharging cycle and ambient temperature
System voltage	± 120Vdc
Battery quantity	1* ± 10 PCS
Capacity	7Ah/9Ah (12V)
PHYSICAL	
Dimension W x D x H (mm)	440 x 680 x 131 (3U)
Net weight (kg)	58/63
ENVIRONMENT	
Safety	CE
Operating environment	0°C~40°C
Relative humidity	0~95% (Non condensing)
Noise level	<40dB at 1 Meter

Specifications are subject to change without prior notice.

Remark: MP BR20120N "MP" means series; "BR" means Battery Rack; "20" means battery number inside the Rack; "120" means the battery system voltage; "N" means battery with neutral connection.